

1

EXISTING CONDITIONS PLAN

SS-SF-PLN-EXST

SCALE: 1/8"=1'-0"

THE MARTIN ARCHITECTURAL GROUP, P.C.
ARCHITECTS AND LAND PLANNERS
A PROFESSIONAL CORPORATION

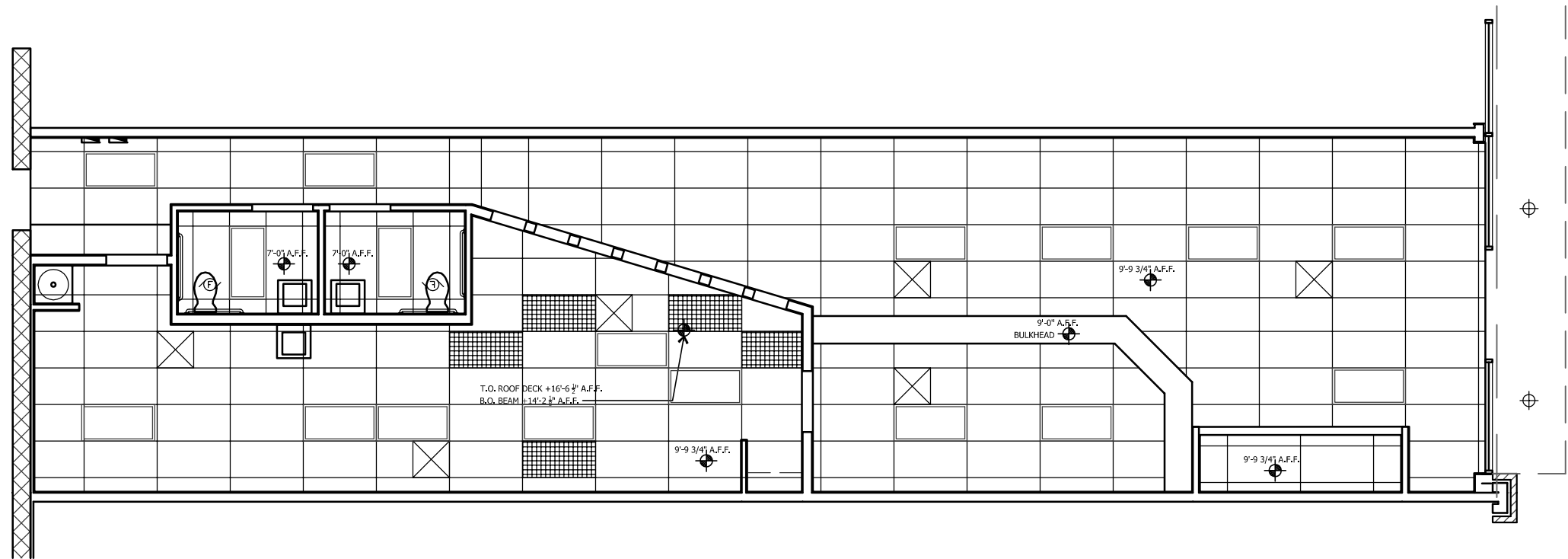
240 North 22nd Street Philadelphia, Pa. 19103 P (215) 665-1080 F (215) 561-5064

PREVIOUS SWEET FROG LOD FLOOR PLAN

SILVER SPRING SQUARE
6416 CARLISLE PIKE, SUITE 1100 MECHANICSBURG, PA

WILDER COMPANIES

NO.:	REVISION:	DATE:	P.M.: DAR
	EXISTING CONDITIONS LOD	7/01/19	P.A.: DAR
			PROJECT NO.: 1917-02
DRAWN BY: DAR	SCALE: 1/8"=1'-0"	DATE: 07/01/2019	SHEET NO. LOD1
<small>ALL REPORTS, PLANS, SPECIFICATIONS AND COMPUTER FILES RELATING TO THIS PROJECT ARE THE PROPERTY OF THE MARTIN ARCHITECTURAL GROUP. THE MARTIN ARCHITECTURAL GROUP RETAINS ALL COMMON LAW, STATUTE AND OTHER RESERVED RIGHTS INCLUDING THE COPYRIGHT THEREOF. REPRODUCTION OF THE MATERIAL HEREIN OR SUBSTANTIAL USE WITHOUT WRITTEN PERMISSION OF THE MARTIN ARCHITECTURAL GROUP VIOLATES THE COPYRIGHT LAWS OF THE UNITED STATES AND WILL BE SUBJECT TO LEGAL PROSECUTION. © 2019, The Martin Architectural Group, P.C.</small>			



1

EXISTING CONDITIONS REFLECTED CEILING PLAN

SS-SF-PLN-EXST

SCALE: 1/8"=1'-0"



THE MARTIN ARCHITECTURAL GROUP, P.C.

ARCHITECTS AND LAND PLANNERS

A PROFESSIONAL CORPORATION

240 North 22nd Street Philadelphia, Pa. 19103

P (215) 665-1080 F (215) 561-5064

PREVIOUS SWEET FROG LOD RCP

SILVER SPRING SQUARE

6416 CARLISLE PIKE, SUITE 1100 MECHANICSBURG, PA

WILDER COMPANIES

NO.:	REVISION:	DATE:	P.M.: DAR
	EXISTING CONDITIONS LOD	7/01/19	P.A.: DAR
			PROJECT NO.: 1917-02
DRAWN BY: DAR	SCALE: 1/8"=1'-0"	DATE: 07/01/2019	SHEET NO. LOD2
ALL REPORTS, PLANS, SPECIFICATIONS AND COMPUTER FILES RELATING TO THIS PROJECT ARE THE PROPERTY OF THE MARTIN ARCHITECTURAL GROUP. THE MARTIN ARCHITECTURAL GROUP RETAINS ALL COMMON LAW, STATUTE AND OTHER RESERVED RIGHTS INCLUDING THE COPYRIGHT THEREOF. REPRODUCTION OF THE MATERIAL HEREIN OR SUBSTANTIAL USE WITHOUT WRITTEN PERMISSION OF THE MARTIN ARCHITECTURAL GROUP VIOLATES THE COPYRIGHT LAWS OF THE UNITED STATES AND WILL BE SUBJECT TO LEGAL PROSECUTION. © 2019, The Martin Architectural Group, P.C.			